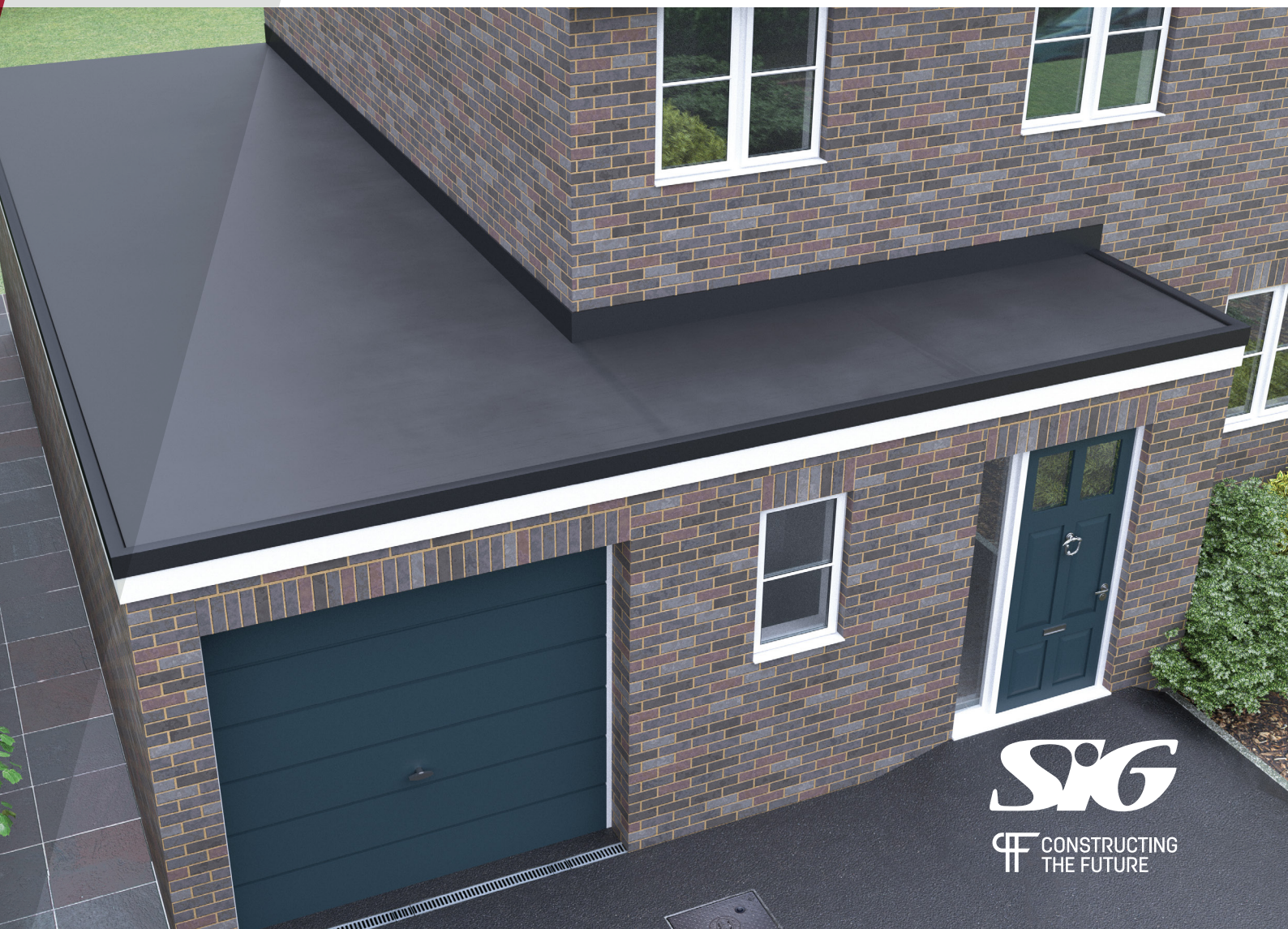




PITCHED AND FLAT ROOFING SOLUTIONS

EPDM

Simple and fast installation with the
FIX-R EPDM membrane and accessories



SIG

CF CONSTRUCTING
THE FUTURE

THE FACTS SPEAK FOR THEMSELVES

- FIX-R EPDM roofing membranes have a life expectancy of 50 years
- Manufactured by the world's leading EPDM manufacturer
- Half a century track record of performance and durability

Unrivalled

- Unmatched weatherability
- Flexibility
- Economical
- Safety - heat free installation

Simplicity

- Wide variety of sheet widths - to suit each individual project and customer
- Choice of sheet thickness
- Seamless - completely reliable
- Cut to size service, fast delivery

Upstand flashing

EPDM membrane

Adhesive

Tapered
tissue faced
insulation

Vapour
Control Layer

Substrate



Why FIX-R

We not only ensure that the products are fit for purpose and meet regulatory requirements, but meet your standards of usability and quality. This is achieved through our close relationships with manufacturers, technical understanding of the marketplace and continued investment in finding the right solution for the job in hand.

You can purchase FIX-R products with the confidence that we will be here to support you now and in the future, as we:

- Offer impartial product advice.
- Support customers with technical advice in branch and on-site.
- Work with trade associations, training and testing organisations.
- Have an indepth understanding of market and legislative compliance.
- Stock the best products from marketing leading manufacturers.

FIX-R can commit to these goals as we have the backing of our parent group, SIG plc, a FTSE 250 listed company.

WHAT MAKES FIX-R EPDM THE RIGHT CHOICE FOR YOU:

- Standard 1.2mm membrane is nearly 10% thicker than leading competitors.
- Life expectancy in excess of 50 years.
- One piece sheet equals no joints therefore no leaks.
- Heat & flame free installation, meaning lower insurance costs.
- Excellent resistance to extremes of temperature, UV & ageing.
- High puncture resistance - will not tear, split or crack.
- Quick & clean to install.
- Choice of 1.2mm or Premium 1.5mm thicknesses.
- Maintenance free.
- Environmentally friendly.
- Perfect for refurbishments and new build project.

Whether it's a small or large flat roof, a refurbishment or a new build, FIX-R is the right choice for you.

Performance you can count on

The flat roofing market was revolutionised over 50 years ago with the introduction of EPDM membranes, now over 1.4 billion m² have been installed. Originally produced for the commercial flat roofing market, EPDM roofing has now become the perfect solution for domestic as well as commercial flat roofing projects.

FIX-R EPDM continues to supply the flat roofing market with a range of EPDM membrane sizes and thicknesses and innovative products, but one thing remains the same - the watertight performance, durability and dependability of FIX-R EPDM membranes.

Manufactured by the world's leading EPDM manufacturer, no other EPDM membrane can match the strong track record of the FIX-R EPDM flat roofing system. FIX-R EPDM has many material characteristics including longevity, weatherability and elasticity. FIX-R membranes are strong, lightweight, easily installed and are the perfect solution for flat roof renovation and new flat roof installations.





PITCHED AND FLAT ROOFING SOLUTIONS

EPDM PRODUCT RANGE



FIX-R EPDM Membranes

These professional grade membranes are available in 1.20mm and 1.50mm thicknesses. All available as whole roll items on 3m cores or in a cut to size format to suit your requirements.

Features:

- Available in 3.05, 4.57, 6.10, 7.62 & 9.15m wide by 30.5m long.
- 1.20mm & 1.50mm thick sheets.



FIX-R Roof Deck Adhesive (WBA)*

This high strength, low odour water based acrylic adhesive is specifically designed for use with FIX-R EPDM Membrane applied to deck surfaces.

Features:

- Available in 2.5L (7 - 10m² coverage), 5L (14 - 20² coverage) and 15L pails (42 - 60m² coverage).
- Designed to be roller applied to flat roof surfaces.



FIX-R Bonding Adhesive*

A high strength, solvent based bonding adhesive, specifically designed and manufactured for flat roofing installations. Perfect for bonding FIX-R EPDM Membrane to horizontal and vertical surfaces. Suitable for a range of surfaces e.g. timber, brickwork, metal and concrete.

Features:

- Available in 1L (1.5 - 2² coverage), 2.5L (4 - 5² coverage) and 5L (8 - 10² coverage).
- Designed to be roller applied to the substrate and sheet backing.



FIX-R EPDM Primer

FIX-R Primer is a solvent based product designed for one step cleaning and priming of EPDM and other suitable surfaces prior to the application of FIX-R Pressure Sensitive (PS) accessories such as 76mm PS Secure Tape, 152mm PS Cover Strip, 228mm PS Uncured Flashing, PS Pipe Seals and PS Walkway Pads.

Features:

- Available in 0.5L and 1L containers.

*Refer to Adhesive Table for compatibility



FIX-R 76mm Pressure Sensitive (P.S.) Secure Tape

FIX-R PS Secure Tape is manufactured with a clear poly backing for easier on-site application, offering over 30% greater peel and shear strength when compared to market rivals. This tape is designed for use with FIX-R EPDM roofing systems to fuse the EPDM membranes together when installing an overlap seam.

Features:

- 30.5m long rolls x 76mm wide.
- Clear Poly Backing.
- To be used with FIX-R Primer.



FIX-R 152mm Pressure Sensitive (P.S.) Cover Strip

FIX-R 152mm PS Cover Strip is used for stripping in metal edging, drip edges, gravel stops and fastening plates. This tape consists of a 1.52mm semi cured EPDM strip laminated to a 0.76 mm fully cured synthetic rubber based pressure sensitive adhesive.

Features:

- 152mm by 30.5m long rolls.
- Resists tearing, cracking and abrasion in all weather conditions.
- Can be used when seaming with FIX-R 76mm PS Secure Tape is not possible.
- Must be used with FIX-R EPDM Primer.



FIX-R 228mm or 304mm Pressure Sensitive (P.S.) Uncured Flashing Tape

FIX-R PS Uncured Flashing Tape is easily moulded and highly adaptable to irregular shapes and surfaces. This self-curing tape is ideal for flashing and waterproofing of roof details such as pipes, corners, outlets and other penetrations.

Features:

- 228mm or 304mm wide by 15.25m long rolls.
- Easily adaptable to irregular shapes and surfaces.
- Must be used with FIX-R EPDM Primer.



FIX-R Pressure Sensitive (P.S.) Pipe Seals

FIX-R EPDM PS Pipe Seals are available in two sizes - small 12.5mm - 76mm and large 25 - 152mm in diameter. FIX-R EPDM Pipe Seals are cured, pre-moulded EPDM Flashings for round flat roof penetrations, with pre-applied secure tape to the base and a stainless steel clamping ring.

Features:

- Pre-applied Secure Tape on the base of the pipe seal allows fast and simple application.
- Ribbed collar for accurate cutting to pipe size.
- Stainless steel clamping ring.
- Must be used with FIX-R EPDM Primer.



PITCHED AND FLAT ROOFING SOLUTIONS



FIX-R Pressure Sensitive (P.S.) RUSS Strip

In common with most single ply material, non-reinforced EPDM membranes will overtime try and pull back to the centre of the membrane by up to 10%. The base tie-in (RUSS) controls the membrane movement and stops the membrane moving away from the perimeter of the roof and upstand details.

FIX-R PS RUSS (Reinforced Universal Secure Strip) is used to mechanically secure EPDM membranes to the substrate. The strip has tape pre-applied along one edge and can be installed horizontally or vertically in conjunction with FIX-R Seam Fastening Plates below the EPDM membrane for additional membrane securement.

Features:

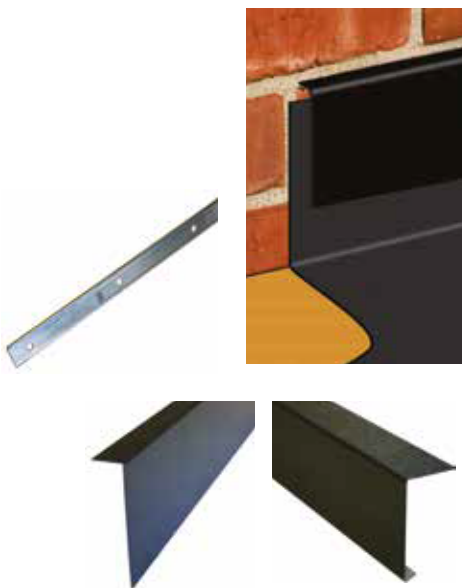
- Ideal for perimeter securement and around penetrations.
- Available in 152mm x 30.5m length rolls.
- Used with FIX-R EPDM Primer.
- Must be used in conjunction with the appropriate fasteners for the substrate.



FIX-R Seam Fastening Plates

FIX-R Seam Fastening Plates are used with FIX-R RUSS Strips to securely clamp the RUSS to the vertical or horizontal surface.

Must be used in conjunction with the appropriate fasteners for the substrate.



FIX-R 75-175mm Plastisol Steel Edge Trim & Termination Bars

For creating a high quality finishing edge to the roof perimeter. Available as 100mm wall flashing and 75 - 175mm deep perimeter trim. The wall trims offer an economical alternative to lead and are not susceptible to theft. Each trim is 3 metres long, fixed in to the wall with RB fasteners.

Perimeter trims feature a drip return on the bottom, with a range of sizes available. Termination Bars are used to create a compression seal to upstands if cutting a chase isn't possible and as a compression to neighbouring roof systems.

Features:

- 3 metre lengths for efficient installation.
- Clean, simple finish to the flat roofing system.



FIX-R RB Trim Fasteners

Trim fasteners are colour matched, low profile fasteners complete with an EPDM Washer to create a watertight seal. Used when mechanically fixing wall trims and edge trims.

Features:

- 40mm lengths.
- Low profile, colour coded to match Plastisol Trims.



FIX-R PVC Perimeter Trim

A high quality, durable roof edge trim manufactured from co-extruded uPVC, the same technology trusted by the industry to manufacture uPVC solid fascia, and ready to install straight out of the box. Providing a neat, simple and fast finishing detail for the edge of any flat roof.

Supplied in 2.5m lengths, it's easily cut on site using traditional roofing tools leaving no sharp edges. The pre-drilled trims save time and improve accuracy when installing.



FIX-R Check Kerb Trim

Fast and easy to install with a pre-applied water seal. FIX-R trims are solid cored for strength which removes the need and cost of additional caps used in hollow trims.

Features:

- Black, White or Anthracite with smooth, gloss appearance.
- Pre-applied water seal and pre-drilled fixing holes.
- Market leading quality.



Built-in-batten

FIX-R Gutter Trim - Built-in-Batten or Standard Back Plate

FIX-R Gutter Trim is fast and easy to install with a pre-applied water seal on the clamping trim. A choice of 'Built-in-Batten' saving the time and cost of an additional timber back plate or 'Standard' back plate which is fitted to the existing batten drip edge.

The two part drip edge trim securely clamps the membrane by mechanically fixing and prevents warping or popping experienced with 'clip in' systems. The outer trim section features a built in water seal to accommodate different thickness membranes, seams and detail flashings.

Features:

- Black, White or Anthracite with smooth, gloss appearance.
- Pre-applied water seal and pre-drilled fixing holes.
- Choice of back plate thicknesses.



Standard back plate



PITCHED AND FLAT ROOFING SOLUTIONS

FIX-R Corners and Joiners

Both FIX-R Gutter Trim and FIX-R Check Kerb Trim systems have joiners, internal corners and external corners, to allow for all roof details.



Kerb and Gutter Joiners

The joiners simply clip into place, made from the same gloss finish uPVC, creating a neat, seamless appearance.

External Corners

Both the gutter and check kerb have external corners details in Black, White or Anthracite. These components make the detailing of roof perimeters fast and easy without having to make any compromise.

Internal Corners

Both the gutter and check kerb have internal corners in Black, White or Anthracite. These components make the detailing of roof perimeters fast and easy, saving the need and time of trying to manufacture neat corners on site. Corners are either glued or fixed in position.

FIX-R Roof Outlets

The FIX-R range of outlets provide the installer with a fast, effective method of detailing to flat roof outlets.

FIX-R 68mm Flat Roof Outlet

The pre-formed 68mm outlet is a fast, efficient method of connecting FIX-R flat roofing systems to existing 68mm internal rainwater pipes on domestic and small commercial roofs. Seamed to the membrane with FIX-R 228mm or 304mm PS Uncured Flashing Tape and FIX-R EPDM Primer.



FIX-R Horizontal Roof Outlet

The horizontal roof outlet is designed as an outlet through parapet walls and pitched roofs as well as the potential to be used as a vertical drain in box gutters. Seamed to the membrane with FIX-R 228mm or 304mm PS Uncured Flashing Tape and FIX-R EPDM Primer.



FIX-R 110mm Top Drain

Top drains give a fast, clean and secure method of joining FIX-R EPDM Membranes to 110mm rainwater pipes for larger flat roofs and commercial properties. The outlet is joined to the EPDM Membrane with the integral clamping ring and FIX-R Water Cut-Off Mastic.





FIX-R Water Cut-Off Mastic

For use in a compression termination, this one part mastic is used in a variety of situations where a compression termination of the FIX-R EPDM Membrane is required.

Features:

- Each tube covers 3 linear metres. This is only to be used as a compression type mastic, not as a sealant for wall chases or gaps.
- Must be used in conjunction with the appropriate fasteners for the substrate.

FIX-R Lap Sealant

The FIX-R Lap Sealant mastic cures off to give a tough rubber consistency. Ideal for sealing wall chase details and using as a finishing bead to compression type joints, it should also be used to protect the edges of 228mm/304mm PS Uncured Flashing Tape from water infiltration during curing.

Features:

- Fast, clean, simple finish to the flat roofing system.

FIX-R EPDM				
Substrate	WBA*	Bonding Can	Bonding Canister / Aerosol	PU Can / Canister
OSB3 / Suitable Plywood	✓	✓	✓	X
Glass Tissue Faced Insulation	X	✓	✓	X
Asphalt **	X	X	X	X
Bituminous Membranes**	X	X	X	X
Metals	X	✓	✓	X
Concrete	X	✓	✓	X
Suitable GRP	X	✓	✓	X

*Sub 100m² roof area only. 4°C & rising (min 24hrs) **Unsuitable for direct overlay



PITCHED AND FLAT ROOFING SOLUTIONS

EPDM QUICK INSTALLATION GUIDE

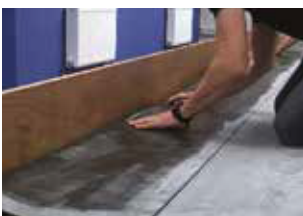
Simple and fast installation with FIX-R EPDM Membrane and accessories.

This guide and datasheets are available at www.fix-r.co.uk.



A. Installing the FIX-R EPDM Membrane

- 1** Unroll the FIX-R EPDM Membrane over the substrate so that the sheet is in position and wrinkle free.
- 2** FIX-R Water Based Roof Deck Adhesive (WBA) is intended for bonding to timber surfaces only. Other surfaces must be installed with FIX-R Bonding Adhesive. Roofs over 100m² must be installed with FIX-R Bonding Adhesive.
- 3** It is essential that the FIX-R EPDM Membrane is allowed to relax prior to adhering. The time for this will vary depending on weather conditions.
- 4** Cut the membrane to length and position the sheet to achieve an overhang off the roof of at least 75mm (3") on both the length and width.
- 5** The RUSS (Reinforced Universal Secure Strip) should already be installed wherever the membrane turns up through an angle change. Fold the sheet onto itself so that one-half of the sheet is exposed.
- 6** Thoroughly stir the FIX-R WBA Adhesive or Bonding Adhesive. Using a medium nap paint roller apply the adhesive to the substrate.
- 7** The adhesive must be applied to 100% of the surface in an even coat without globs or puddles. Alternatively apply a thin coat to the membrane and substrate.
- 8** Lay the sheet onto the coated substrate avoiding wrinkles by rolling the middle of the sheet first. Immediately after rolling the sheet into the adhesive, broom the membrane to achieve maximum contact.
- 9** FIX-R WBA Roof Deck Adhesive must not be used if temperatures are, or expected to be below 4C° within 24 hours.
- 10** If using FIX-R Bonding Adhesive on the deck area, the adhesive must be applied to the substrate and the underside of the membrane. The FIX-R Bonding Adhesive must be touch dry with no wet puddles or globules before the membrane is mated onto the deck.



B. FIX-R Reinforced Universal Securement Strip (RUSS)

FIX-R PS RUSS is used to mechanically secure FIX-R EPDM Membranes to the substrate. The strip has PS tape pre-applied along one edge, and can be installed horizontally or vertically in conjunction with FIX-R Seam Fastening Plates below the EPDM membrane for additional membrane securement. RUSS should be used at any angle change and at the entire roof perimeter on larger installations.

Seam Fastening Plates are used with RUSS to securely clamp the RUSS to the surface; these must be used in conjunction with the appropriate fasteners for the substrate.

- 1 Mechanically fasten the RUSS horizontally into the decking or into the upstand with the PS section being to the inside of the roof.
- 2 Apply FIX-R Primer to the area on the underside of the EPDM membrane that will come into contact with the 75mm PS tape on the RUSS.
- 3 Once the primer is dry, remove the protective strip from the PS tape on the RUSS. Lay the primed membrane into the PS tape with no wrinkles or air gaps and smooth in by hand, then roll with a hand roller.
- 4 Once bonded to the RUSS, finish the upstand by applying FIX-R Bonding Adhesive to the remainder of the RUSS, upstand and membrane.

Please note: Other UK EPDM distributors state that base ties-ins aren't required on roofs under 100m². The membrane, irrelevant of size, will pull to the centre and eventually pull away from the wall.

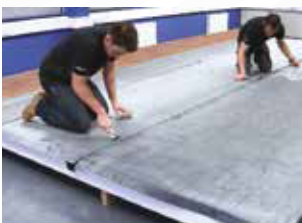
C. FIX-R Bonding Adhesive

FIX-R Bonding Adhesive is used on all vertical surfaces on the roof area, e.g. wall upstands, batten and skylight edges. This adhesive will work on porous and non-porous surfaces, providing they are clean and dry. The FIX-R Bonding Adhesive will enable tight angles to be formed quickly and easily to give great product versatility.

- 1 Apply the bonding adhesive to the side of the RUSS or exposed decking. Also apply the bonding adhesive to the relevant upstand termination or step down and to the under side of the FIX-R EPDM Membrane.
- 2 Once the adhesive has become touch dry with no wet puddles, mate the two surfaces together, leaving no voids between the FIX-R EPDM Membrane and the receiving surface.
- 3 Applying positive pressure to the membrane, work the membrane up the upstand to the desired height. These areas should be rolled to achieve a strong bond between the membrane and substrate.



PITCHED AND FLAT ROOFING SOLUTIONS



D. Seaming with FIX-R 76mm PS Secure Tape

The membrane should be positioned so that the width of the seam is 76mm (3"). Mark a line 5mm (1/4") from the leading seam edge.

- 1 Fold the top sheet back to expose the seam area. Using a scrubbing pad apply the FIX-R Primer to the seam area. Apply the primer beyond the seam edge to the line. FIX-R Primer must be dry before application of PS tapes.

NOTE: If the EPDM membrane is contaminated with dirt etc., clean the seam area before applying the primer.

- 2 Using moderate pressure, set the PS Secure Tape into place to keep air from being trapped under the tape and unroll the 76mm wide tape along the length of the seam, aligning the PS Secure Tape (not the clear backing) along the chalk line. Care must be taken not to get any bubbles or wrinkles in the tape.
- 3 Lay the top membrane onto the PS Secure Tape. Pull away the poly backing from the tape at a 45° degree angle to the seam. While removing the poly backing, draw your hand across the seam, from the back to the leading edge. Roll the seam at right angles to the seam direction, not along it.



E. FIX-R 152mm PS Cover Strip

When butt jointing a FIX-R EPDM Membrane or seaming to a metal drip or similar, a FIX-R 152mm PS Cover Strip is used. This tape is not for detailing of corners, pipes or penetrations.

- 1 Ensure there is no gap between the membrane when butt jointing. The 152mm cover strip should be centrally located over the joint.
- 2 Apply FIX-R Primer to the area to be seamed. Apply the primer 80-100mm either side of the join in the EPDM sheets.
- 3 Once the FIX-R Primer has dried, peel back 150mm of the poly backing and press the PS cover strip into the primed area. Once the tape is held in position, peel back the poly backing and smooth the tape into the primed area. Progress along the seam.
- 4 Once the entire length of tape is applied to the seam, roll across the 152mm cover strip with a hand roller.
- 5 Where 152mm cover strips intersect other cover strips, FIX-R 228mm PS Uncured Flashing Tape patches must be applied.



F. FIX-R 228mm PS Uncured Flashing Tape

This tape is used for any detail work necessary on the roof. It has the ability to mould to almost any shape and will adhere to most surfaces, provided the surface is clean, dry, and correctly primed with FIX-R EPDM primer.

If submersion of 228mm PS Flashing is likely to occur, all edges should be protected with FIX-R Lap Sealant. Lap Sealant helps to prevent water infiltrating between the flashing ply and the tape ply before the flashing has fully cured on the roof.

Internal Corner

- 1** The fold should be cut back to leave a 75mm wide flap. Apply FIX-R EPDM Primer to the front and back of the flap and to the membrane on the wall. FIX-R Primer must be allowed to dry before the application of the PS Uncured Flashing Tape.
- 2** Cut an appropriate size piece of 228mm PS Uncured Flashing Tape (minimum 50mm wider than the flap of membrane), press the flap back to the upstand and install the uncured flashing tape.
- 3** Roll the taped area with a hand roller once installed.

External Corner

- 1** Cut the FIX-R EPDM Membrane at a 45° angle to allow the membrane to run around the corner and create both upstands. Bond in place with FIX-R Bonding Adhesive. Cut a section of FIX-R 228mm PS Uncured Flashing Tape to a minimum of 75mm onto the deck and 50mm beyond the angled cut in the membrane.
- 2** Apply FIX-R Primer to the marked area to be flashed and allow to dry. The area must be clean and dry before application of the primer. Apply the primer to the membrane and to the upstand substrate. FIX-R Primer must be allowed to dry before application of tapes.
- 3** Start installing the tape from the top point. Work the tape down the upstands first and into the bottom angle change.
- 4** Work the tape onto the deck around the corner and smooth out and roll the entire flashing with a hand roller.



PITCHED AND FLAT ROOFING SOLUTIONS



G. FIX-R Pre-Fabricated Pipe Seal

Whether using the small or the large pipe boot, ensure the area where the boot will be adhered, is clean and dry.

- 1 Cut the FIX-R PS Pipe Seal above the raised "rib" one size smaller than the pipe diameter. DO NOT CUT THROUGH THE RIB.
- 2 Pull the pipe seal over the pipe until the base flange is in contact with the FIX-R EPDM Membrane.
- 3 Once in position clamp the seal to the pipe with the supplied metal clamp and mark around the base of the seal to give a line to prime up to. Pull the pipe seal upwards on the pipe to expose the membrane and apply FIX-R EPDM Primer to the EPDM Membrane.
- 4 Pull the pipe seal back down over the pipe and into position. Remove the poly backing from the tape and with hand pressure, press the tape onto the primed area. Roll the splice area with a hand roller.
- 5 Apply FIX-R Uncured T-Joint Patches where the pipe seal intersects a field splice.

NOTE: Temperature of the pipe must not exceed 82° C (180° F)

Fabricated Pipe & Penetration Flashings

To fabricate a pipe boot with 228mm tape, follow the procedures in the full FIX-R EPDM Installation Guide at www.fix-r.co.uk



H. FIX-R Outlets & Drains

There are two basic methods for sealing to an internal drain. FIX-R pre-made outlets of various types can be used for standard outlets or an on-site method may be used for non-standard outlets with FIX-R PS Uncured Flashing Tape.

Flat Roof Outlet for 68mm Outlet

These are 68mm roof outlets designed to be inserted into the existing 68mm diameter down pipe. The outlet is fitted with an anti-backup seal to achieve a watertight joint. The outlet is attached to the membrane using FIX-R 228mm PS Uncured Flashing Tape. A leaf grate for this outlet is also available.

- 1 Cut the outlet flange back to leave a minimum 50mm head and cut the membrane back to meet the perimeter of the outlet head. Secure the outlet into the decking and apply FIX-R Primer to the head of the outlet and to the EPDM Membrane.
- 2 Apply the Uncured PS tape to the primed area. Once fitted, cut a small section from the centre of the tape out to expose the outlet opening and press the remaining tape down into the outlet. Roll the entire flashing with a hand roller.
- 3 Finally, install the leaf grate to complete the 68mm flat roof outlet.



Top Drain

These are designed for 110mm flat roof outlets to allow high water flow on larger roofs.

- 1** Fit the outlet into the roof before installing the membrane; ensure the outlet has the yellow protective cap installed. Install the FIX-R EPDM Membrane to the roof and over the outlet. Place the cutting guide over the pin and cut around the circular plate.
- 2** Remove the circular section of membrane and the yellow protective cap from the outlet.
- 3** Insert a bead of FIX-R Water Cut-Off Mastic between the underside of the membrane and the top flange on the outlet. Screw in the clamping ring until it's completely tightened. Use the two tightening lugs to apply leverage to the ring.
- 4** Install the leaf grate into the three locating tabs.

Horizontal Roof Drain

These are for roofs designed with horizontal drains to go through walls and pitched roofs. The FIX-R Horizontal Roof Drain is fitted to the deck and sealed to the membrane using FIX-R 228mm PS Uncured Flashing Tape.

- 1** Install the outlet into the parapet wall before installing the FIX-R EPDM Membrane. Install the FIX-R EPDM Membrane over the outlet with FIX-R Bonding Adhesive.
- 2** Cut the EPDM membrane away from the outlet opening by 50mm. Apply FIX-R Primer to the membrane, outlet face and into the outlet pipe.
- 3** Install 228mm PS uncured flashing tape to the outlet. This should be large enough to join onto the membrane by a minimum of 50mm. Cut a small square out of the middle of the tape and mould the tape into the outlet pipe by 25mm.
- 4** Cut a second section of 228mm PS flashing tape 100mm wide. This will be inserted into the outlet pipe to reinforce and lengthen the tape that was turned into the pipe by 25mm. Apply FIX-R Primer to the outlet pipe and to the already installed tape before application.
- 5** Once the second section of tape is installed, complete by inserting the leaf grate into the outlet.



PITCHED AND FLAT ROOFING SOLUTIONS



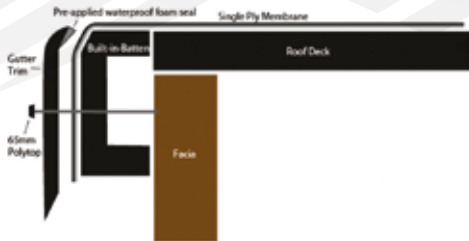
I. FIX-R Wall Trim

- 1** Before the membrane is laid, cut a chase into the mortar line a minimum of 150mm above the flat of the roof surface, at least 25mm deep. Clean all dust and debris from the chase, wall and roof area.
- 2** Ensure the membrane is fully bonded up to the chase with FIX-R Bonding Adhesive.
- 3** Insert the wall trim into the chase and fix at a maximum of 300mm spacing with FIX-R RB Fasteners. Overlap the trim end by a minimum of 150mm.
- 4** To bend around corners, simply snip the top 25mm edge and bend to create the desired angle.
- 5** Seal the top edge of the trim to the wall with FIX-R Lap Sealant.

J. Coping Stone Parapet

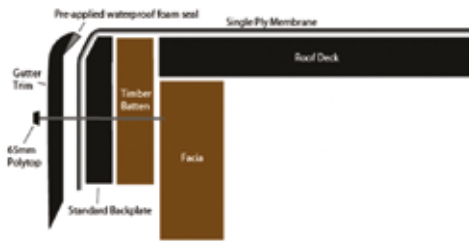
- 1** Lay FIX-R EPDM 2/3rds across the wall using FIX-R Bonding Adhesive and apply a bead of water cut-off mastic under the outside edge of the membrane and compress.
- 2** Apply an even bed of mortar from the membrane and onto the outer brick wall.
- 3** Lay suitable coping stones, ensuring they have sufficient overhang and drip channels.

Gutter trim - built in batten



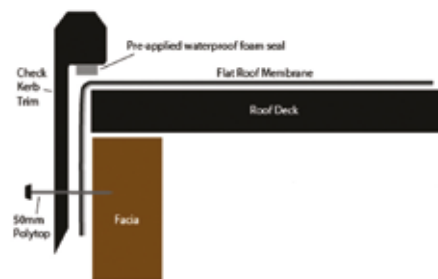
- No extra purchasing of batten or struggling with batten
- Complete rot free roof perimeter

Gutter trim - standard back plate



- Alternative option, back plate fits to existing timber batten
- Ready to fit complete with water seal
- Pre-drilled for fast, accurate fitting

Check kerb - edge trim



- Labour saving, no fixing of perimeter timber or forming membrane over batten
- Solid core trim, complete with all corners and joints
- A simple position, compression and fix install

K. FIX-R PVC Perimeter Trims

Gutter System

This is available in two options, 'standard' and 'built-in batten' back plate. The standard requires a timber batten to be installed first, then the back plate fixed to it. The 'built-in batten' doesn't require the extra timber batten.

- 1 Fix the 25mm x 40mm back plate to the fascia at the edge of the roof.
- 2 Allow a minimum of 50mm FIX-R EPDM Membrane to go over the back plate.
- 3 Position the front plate with foam seal to clamp the membrane between the two sections and fully fix into place with the supplied fixings.
- 4 Between lengths, allow a 2.5mm expansion joint for each trim.
- 5 All corners are adhered or fixed in place with polypins.

Note: In areas of high wind, exposed areas and high buildings, additional fixings between pre-drilled holes is recommended.

L. FIX-R Check Kerb System

Used to create upstand and edge trim in one go. The FIX-R Check Kerb Trims have a pre-applied water seal for fast, tidy installations.

- 1 Lay the membrane and allow a minimum of 75mm overhang.
- 2 Ensure the membrane is clean; position the edge trim and firmly push down to compress the water seal by a minimum of 30%.
- 3 Fix the trim into place using the supplied PolyTop fixings.
- 4 Between lengths, allow a 2.5mm expansion joint for each trim.
- 5 All corners are adhered or fixed in place with polypins.

Note: If a secure fixing cannot be achieved, a timber fixer should be fitted to the vertical edge of the roof.

In areas of high wind, exposed areas and high buildings, additional fixings between pre-drilled holes is recommended.



PITCHED AND FLAT ROOFING SOLUTIONS

ALL AREAS

Mark Tierney



Padraig Prendergast



Barry McSweeney



Gerard Dillion



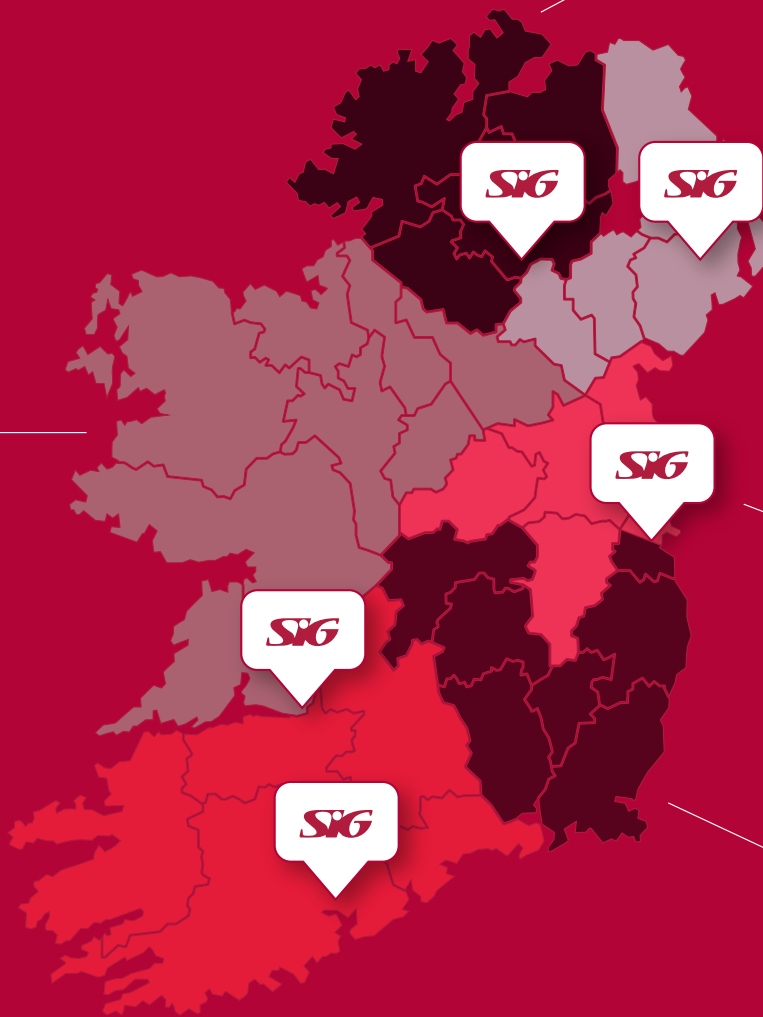
Evan Armstrong



Darren Quinn



Emmet McLaughlin



SIG DUBLIN

SIG Ireland
Turnpike Road
Ballymount, Dublin 22
D22 P5R7
Tel: (+353 1) 6234541

SIG CORK

Unit 1, Doughcloyne
Industrial Estate
Sarsfield Road, Wilton
Co .Cork T12 W578
Tel: (+353 21) 4321868

SIG LIMERICK

UNIT D3
Eastway Business Park
Ballysimon Road
Limerick V94RDD4
Tel: (353 61) 531 381

SIG BELFAST

8 Balmoral Road
Balmoral Industrial Est.
Belfast
BT12 6QA
Tel: (+44) 28 90380060

SIG OMAGH

Killybrack Business Park
3 Killybrack Road
Omagh
Co. Tyrone BT79 7DG
Tel: (+44) 28 8224 6220