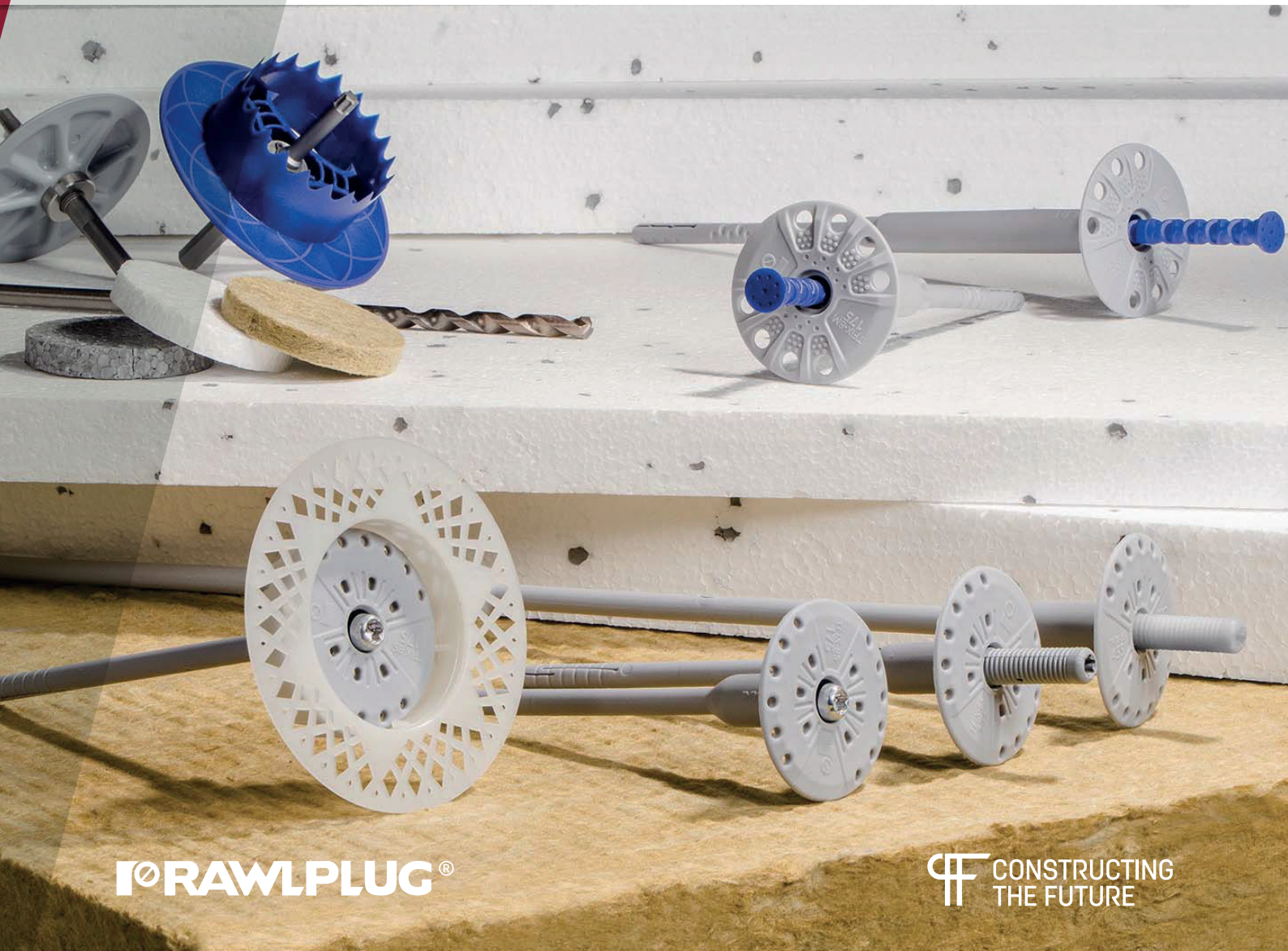




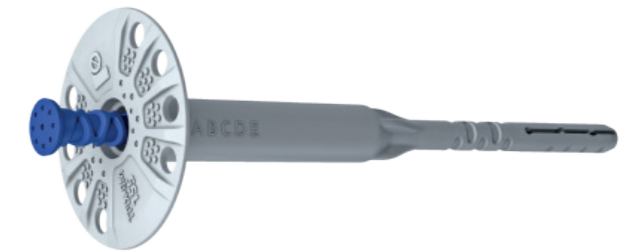
Fixings & Accessories Range





R-TFIX-8M Facade fixing with metal nail

Versatile hammer-in facade fixing with steel nail recommended for ETICS



Features and benefits

- Quick and easy installation in all substrates (categories A,B,C,D,E)
- Unique sleeve compression zone for precision installations
- Reduced point thermal transmittance to 0.001W/K thanks to high steel nail overmould, which decreases facade heat losses
- Highest loads with anchoring zone reduced in length to 25 mm
- Excellent plate stiffness (value 1.0 kN/mm) ensures smooth elevation surface and stable insulation system
- Increased head diameter enabling centric hammer driving for improved installation comfort
- Pre-assembled components of the fixing allow you to save time

Base material

Approved for use in:

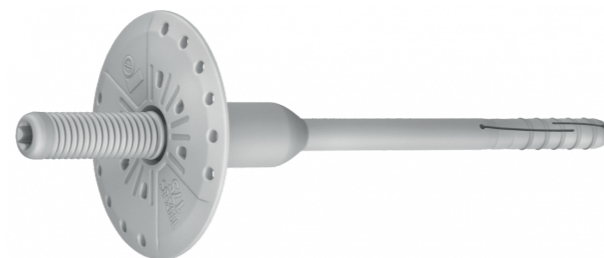
- Concrete C12/15-C50/60 (Use category A)
- External wall panel of concrete C16/20 – C50/60 (Use category A)
- Solid Brick (Use category B)
- Solid Sand-lime Brick (Use category B)
- Hollow Sand-lime Brick (Use category C)
- Vertically-perforated clay block (Use category C)
- Reinforced components of lightweight aggregate concrete (Use category D)
- Aerated Concrete Block (Use category D)
- Hollow Lightweight Concrete

Applications

- External Thermal Insulation Composite Systems (ETICS)
- Polystyrene (EPS) boards
- Mineral wool (MW) boards
- Polyurethane (PU) boards
- Cork boards
- Light wood wool building boards

Product information

Size	SIG Code	Product Code	Fixing			Fixture
			Diameter	Length	Plate diameter	Recommended thickness
			d	L	D	t _{fix} A, B, C
[mm]						
Ø8	M0025420	R-TFIX-8M-095	8	95	60	60
	M0200225	R-TFIX-8M-115	8	115	60	80
	M0020532	R-TFIX-8M-135	8	135	60	100
	M0200227	R-TFIX-8M-155	8	155	60	120
	M0020531	R-TFIX-8M-175	8	175	60	140
	M0021543	R-TFIX-8M-195	8	195	60	160
	M0200250	R-TFIX-8M-215	8	215	60	180
	M0200185	R-TFIX-8M-235	8	235	60	200
	M0200228	R-TFIX-8M-255	8	255	60	220
	M0200229	R-TFIX-8M-275	8	275	60	240
	M0020400	R-TFIX-8M-295	8	295	60	260



R-TFIX-8S Universal facade fixings

Features and benefits

- Quick and easy installation in all substrates (categories A,B,C,D,E)
- Unique sleeve compression zone for precision installations
- The long plastic overmoulding on the R-TFIX-8S screw minimises thermal bridging (value 0,001-0,002W/K), contributing to energy-saving benefits
- Plate stiffness (value 0.6 kN/mm) ensures smooth elevation surface and stable insulation system
- Unique design allows for high load-bearing capacities. This reduces the quantity of fixings required per square metre of insulation
- The shortest embedment depth at the maximum strength parameters
- Pre-assembled screw saves time and labour

Base material

Approved for use in:

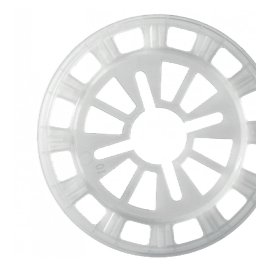
- Concrete C12/15-C50/60 (Use category A)
- Solid Brick (Use category B)
- Vertically-perforated clay block (Use category C)
- Autoclaved Aerated Concrete (Use Category E)
- External wall panel of concrete C16/20 – C50/60 (Use category A)
- Solid Sand-lime Brick (Use category B)
- Hollow Lightweight Concrete Block (Use category D)

Applications

- External Thermal Insulation Composite Systems (ETICS)
- Polystyrene (EPS) boards
- Mineral wool (MW) boards
- Polyurethane (PU) boards
- Cork boards
- Light wood wool building boards

Product information

Size	SIG Code	Product Code	Fixing			Fixture	
			Diameter	Plate diameter	Length	Recommended thickness	
			d	D	L	t _{fix} A, B, C, D	t _{fix} E
[mm]							
Ø8	M0025427	R-TFIX-8S-115	8	60	115	80	40
	M0200231	R-TFIX-8S-135	8	60	135	100	60
	M0025401	R-TFIX-8S-155	8	60	155	120	80
	M0020034	R-TFIX-8S-175	8	60	175	140	100
	M0025428	R-TFIX-8S-195	8	60	195	160	120
	M0200230	R-TFIX-8S-215	8	60	215	180	140
	M0200232	R-TFIX-8S-235	8	60	235	200	160
	M0200233	R-TFIX-8S-255	8	60	255	220	180
	M0200236	R-TFIX-8S-275	8	60	275	240	200
	M0200235	R-TFIX-8S-295	8	60	295	260	220
	M0020401	R-TFIX-8S-315	8	60	315	280	250
	M0200234	R-TFIX-8S-335	8	60	335	300	260
	M0020402	R-TFIX-8S-355	8	60	355	320	280
	M0020403	R-TFIX-8S-375	8	60	375	340	300
	M0020404	R-TFIX-8S-395	8	60	395	360	320
	M0020405	R-TFIX-8S-415	8	60	415	380	340
	M0020406	R-TFIX-8S-435	8	60	435	400	360
M0020407	R-TFIX-8S-455	8	60	455	420	380	



KWL Insulation retaining plate

Features and benefits

- Quick and easy application possible with all ETICS fixings
- Polyamide standard versions are recommended for cost-effective applications
- A versatile solution for many insulation scenarios
- Insulation retaining plate for use in combination with facade fixings from TFIX and KI ranges

Base material

Approved for use in:

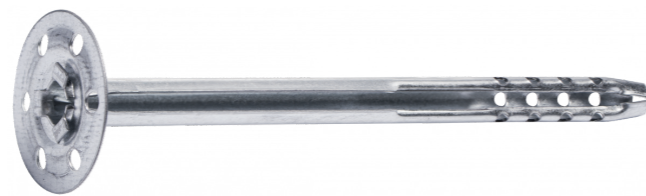
- Polystyrene (EPS) Boards
- Mineral Wool Boards

Applications

- External Thermal Insulation Composite Systems (ETICS)
- Polystyrene (EPS) boards
- Mineral wool (MW) boards
- Polyurethane (PU) boards

Product information

Size	SIG Code	Product Code	Fixing	
			Plate diameter	Length
			D	L
[mm]				
Ø90	M0020356	KWL-090-PP	90	15



MBA-SS Stainless steel facade fixing

Fire-resistant stainless steel insulation fixing

Features and benefits

- Metal facade fixing classified as A1 Fire Rating
- Stainless steel material for high corrosion resistance
- Fast and simple hammer-set installation reduces working times
- Extensive dimensional range allows anchorage of insulation boards up to 370mm thick
- Accessory spreader plate, MKC-SS (85mm diameter) also available for installation of soft insulation materials such as mineral wool
- Longer lengths available on request

Base material

Approved for use in:

- Concrete C20/25-C50/60 (Use category A)
- Solid Sand-lime Brick
- Solid Brick
- Aerated Concrete Block

Applications

- Mineral wool (MW) boards
- Glass wool
- Lightweight wood wool building boards
- Lightweight recycled panels
- Polystyrene (EPS) boards
- Polyurethane (PU) boards
- Insulated Plasterboard

Product information

Size	SIG Code	Product Code	Fixing			Fixture
			Diameter	Length	Plate diameter	Max. thickness
			d	L	D	t _{fix} E
			[mm]			
Ø8	M0200247	MBA-SS-08090	8	90	35	40
	M0020560	MBA-SS-08110	8	110	35	60
	M0200249	MBA-SS-08140	8	140	35	90
	M0020562	MBA-SS-08170	8	170	35	120
	M0020561	MBA-SS-08200	8	200	35	150
	M0200248	MBA-SS-08250	8	250	35	200
	M0200246	MBA-SS-08300	8	300	35	250



MBA Steel facade fixing

Fire-resistant metal insulation fixing

Features and benefits

- Metal facade fixing classified as A1 Fire Rating
- Fast and simple hammer-set installation reduces working times
- Extensive dimensional range allows anchorage of insulation boards up to 370mm thick
- Accessory spreader plate, MKC (85mm diameter) also available for installation of soft insulation materials such as mineral wool
- Longer lengths available on request

Base material

Approved for use in:

- Concrete C20/25-C50/60 (Use category A)
- Solid Sand-lime Brick (Use category B)
- Solid Brick (Use category B)
- Aerated Concrete Block (Use category D)

Applications

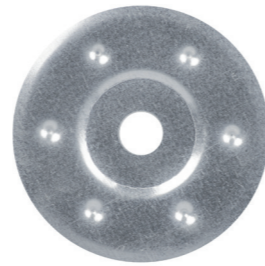
- Mineral wool (MW) boards
- Glass wool
- Lightweight wood wool building boards
- Lightweight recycled panels
- Polystyrene (EPS) boards
- Polyurethane (PU) boards
- Insulated Plasterboard

Product information

Size	SIG Code	Product Code	Fixing			Fixture
			Diameter	Length	Plate diameter	Max. thickness
			d	L	D	t _{fix}
			[mm]			
Ø8	I4003040	MBA-08090	8	90	35	40
	I4003045	MBA-08110	8	110	35	60
	I4003050	MBA-08140	8	140	35	90
	I3011730	MBA-08170	8	170	35	120
	I3011731	MBA-08200	8	200	35	150

MKC-85 & MKC-SS-85

Support washer for MBA & MBA-SS Fixings



Features and benefits

- Fire resistant washer
- Stainless steel washer for corrosion resistance
- Washer to suit all types of compressible thermal insulation materials
- Quick and easy application
- A versatile solution for many insulation scenarios

Applications

- Polystyrene (EPS) boards
- Polyurethane (PU) boards
- Mineral wool (MW) boards
- Cork boards
- Light wood wool boards

Product information

SIG Code	Product Code	Diameter	Inside diameter	Thickness	Length
		d	d _i	t	L
[mm]					
M5011237	MKC-85	85	14	0.5	2.8
M0020563	MKC-SS-85	85	14	0.5	2.8

R-WX-T

Self-drilling screws for steel



Features and benefits

- Screw for trapezoidal steel sheet – max thickness of 2 x 1.25mm, TORX25 drive
- Hardened thread surface
- High quality anti-corrosion coating guarantees resistance of 15 Kesternich cycles
- Shape and type of the thread specially designed to allow connecting to metal sheets
- The drill point is designed to provide a fast and hassle-free installation. Sharp point of the drill prevents movement of the surface of the fixture
- Reduced drilling point ensures optimal tightness and correct hole diameter in thin metal sheets
- Pre-assembly with other components is possible before installation
- A4 Stainless Steel available for high corrosion resistance

Base material

Approved for use in:

- Metal Sheet & Profiles

Applications

- Insulation layers on flat roofs together with an appropriate telescopic or steel washer

Product information

SIG Code	Product Code	Screw	
		Diameter	Length
		d	L
[mm]			
M0020421	R-WX-48T080	4.8	80
M0020422	R-WX-48T100	4.8	100
M0020423	R-WX-48T120	4.8	120
M0200218	R-WX-48T140	4.8	140
M0020424	R-WX-48T160	4.8	160
M0020389	R-WX-48T180	4.8	180
M0020398	R-WX-48T200	4.8	200
M0020425	R-WX-48T240	4.8	240
M0020426	R-WX-48T300	4.8	300
M0020427	R-WX-48T080-A4	4.8	80
M0020428	R-WX-48T100-A4	4.8	100
M0020429	R-WX-48T120-A4	4.8	120
M0020430	R-WX-48T140-A4	4.8	140
M0020355	R-WX-48T160-A4	4.8	160
M0020390	R-WX-48T180-A4	4.8	180
M0020399	R-WX-48T200-A4	4.8	200
M0020431	R-WX-48T220-A4	4.8	220
M0020432	R-WX-48T240-A4	4.8	240
M0020530	R-WX-55T260-A4	5.5	260
M0020433	R-WX-55T350-A4	5.5	350

R-WBT Screw for concrete



Screw for concrete substrates, TX25 head. Shape and type of the thread specially designed to allow connecting to concrete and wood

Features and benefits

- Hardened thread surface
- High quality anti-corrosion coating guarantees resistance of 15 Kesternich cycles
- Shape and type of the thread specially designed to allow connecting to concrete and wood
- The drill point is designed to provide a fast and hassle-free installation. Sharp point of the drill prevents movement of the surface of the fixture
- Pre-assembly with other component is possible before installation

Base material

Approved for use in:

- Concrete
- Timber
- Concrete Slab

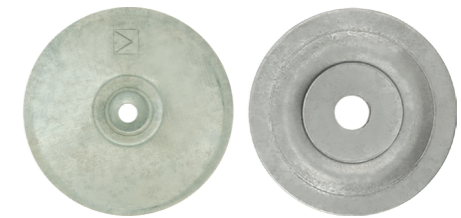
Applications

- Insulation materials in flat roof applications in conjunction with telescopic connector and steel washer

Product information

SIG Code	Product Code	Screw		Fixture
		Diameter	Length	Max. thickness
		d	L	t _{fix}
		[mm]		
M0020411	R-WBT-61075	6.1	75	90
M0020412	R-WBT-61100	6.1	100	110
M0020413	R-WBT-61120	6.1	120	180
M0020414	R-WBT-61140	6.1	140	270
M0020415	R-WBT-61160	6.1	160	290
M0020357	R-WBT-61180	6.1	180	310
M0020172	R-WBT-61200	6.1	200	330
M0020416	R-WBT-61220	6.1	220	430
M0020168	R-WBT-61240	6.1	240	450
M0020417	R-WBT-61260	6.1	260	470
M0020418	R-WBT-61300	6.1	300	510

R-POK-06-ALZN & R-POK-070-ALZN Aluminium Zinc Washers



Steel washer with special form for roofing applications, for use with all types of roofing screws

Features and benefits

- Round washer made of zinc plated sheet. Its sculpted shape allows for trouble-free installation using a dedicated rigid mounting screw for hard roof insulation

Base material

Approved for use in:

- Metal Sheet & Profiles
- Chipboard
- Concrete
- Timber
- Plywood
- Concrete Slab

Applications

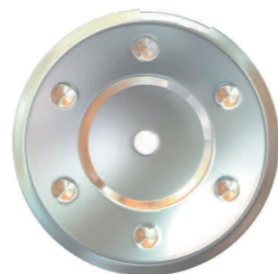
- Systems of mechanically fastened flexible roof waterproofing membrane

Product information

SIG Code	Product Code	Aluminum washer		
		Hole diameter	Plate diameter	Thickness
		d	D	t
		[mm]		
M0200219	R-POK-06-ALZN	6.5	76	0.7
M0020574	R-POK-070-ALZN	6.5	70	0.7

R-RSW Stainless steel washer

Stainless steel washer for use with OCS self-drill screws for rainscreen cladding applications



Features and benefits

- Fire resistant washer
- Stainless steel washer for corrosion resistance
- Washer to suit all types of compressible thermal insulation materials
- Quick and easy application
- A versatile solution for many insulation scenarios

Applications

- Polystyrene (EPS) boards
- Polyurethane (PU) boards
- Mineral wool (MW) boards
- Cork boards
- Light wood wool boards

Product information

SIG Code	Product Code	Diameter	Inside diameter	Thickness	Length
		d	d _i	t	L
[mm]					
M0020354	R-RSW-85-SS	85	7.0	0.5	2.8

R-WHO Concrete frame screw

Special frame screw for window and door installation



Features and benefits

- Flat head for flush installation with the window and door frames
- Expansion-free fixing imposes less stress on substrate during installation
- High load resistances from a relatively small hole diameter
- Easily removed for temporary works
- Longer lengths available on request

Base material

Approved for use in:

- Concrete
- Hollow Brick
- Solid Brick
- Aerated Concrete Block

Applications

- Door and window frames
- Securing formwork
- Suspended ceilings
- Lightweight steel angles
- Timber constructions

Product information

Size	SIG Code	Product Code	Screw		Fixture		
			Diameter	Length	Max. thickness		Hole diameter
			d	L	t _{fix} Concrete	t _{fix} Other	d _f
[mm]							
Ø7.5	M0200260	R-WHO-75052	7.5	52	22	-	8
	M0200009	R-WHO-75072	7.5	72	42	12	8
	M0020089	R-WHO-75092	7.5	92	62	32	8
	M0200012	R-WHO-75112	7.5	112	82	52	8
	M0200014	R-WHO-75132	7.5	132	102	72	8
	M0020157	R-WHO-75152	7.5	152	122	92	8
	M0025354	R-WHO-75182	7.5	182	152	122	8
	M0020410	R-WHO-75202	7.5	202	172	142	8
	M0200212	R-WHO-75212	7.5	212	182	152	8

RT-SDSA Drill bits Aggressor SDS plus

SDS plus drill bits for fast drilling in concrete



Features and benefits

- Centre point for quick commencement of drilling without the drill slipping
- 160° angle tip allows for quick drilling in concrete
- Very deep seating of carbide plate significantly improves connection with the drill core, which affects quality
- Aggressive grooves allow fast extraction of material and increases the drilling speed
- Steel with specification 34CrNiMo6 provides high strength and durability
- Heat treated, which increases the hardness of the steel to 52 HRC for optimal resistance during operation
- Extremely high quality, cylindricity and axial alignment of drilled holes, confirmed by international Sicher Safe certificate

Base material

Approved for use in:

- Concrete
- Solid Brick
- Hollow Brick
- Natural Stone (after site testing)
- Aerated Concrete Block

Applications

- Drilling holes in concrete, brick and stone
- Suitable for operation with SDS plus hammer drill

Product information

SIG Code	Product Code	Drill diameter	Length	Working length
		[mm]		
M0200057	RT-SDSA-5/110	5	110	50
M0200058	RT-SDSA-5/160	5	160	100
M0200060	RT-SDSA-5.5/160	5.5	160	100
M0200163	RT-SDSA-5.5/260	5.5	260	200
M0200061	RT-SDSA-6/110	6	110	50
M0200062	RT-SDSA-6/160	6	160	100
M0020579	RT-SDSA-6/210	6	210	150
M0200164	RT-SDSA-6/260	6	260	200
M0020147	RT-SDSA-6/360	6	360	300
M0200165	RT-SDSA-6.5/160	6.5	160	100
M0200166	RT-SDSA-6.5/210	6.5	210	150
M0200063	RT-SDSA-8/110	8	110	50
M0200064	RT-SDSA-8/160	8	160	100

M0200065	RT-SDSA-8/210	8	210	150
M0200066	RT-SDSA-8/260	8	260	200
M0200067	RT-SDSA-8/310	8	310	250
M0200068	RT-SDSA-8/360	8	360	300
M0020578	RT-SDSA-8/410	8	410	350
M0020577	RT-SDSA-8/610	8	610	550
M0200069	RT-SDSA-10/210	10	210	150
M0200070	RT-SDSA-10/260	10	260	200
M0200071	RT-SDSA-10/310	10	310	250
M0200072	RT-SDSA-10/360	10	360	300
M0200073	RT-SDSA-12/210	12	210	150
M0200074	RT-SDSA-12/260	12	260	200
M0200075	RT-SDSA-12/310	12	310	250
M0020587	RT-SDSA-12/460	12	460	400
M0020586	RT-SDSA-12/610	12	610	550
M0020134	RT-SDSA-14/160	14	160	100
M0020133	RT-SDSA-14/210	14	210	150
M0200223	RT-SDSA-14/260	14	260	200
M0020585	RT-SDSA-14/310	14	310	250
M0020584	RT-SDSA-14/460	14	460	400
M0200076	RT-SDSA-16/210	16	210	150
M0200077	RT-SDSA-16/260	16	260	200
M0200078	RT-SDSA-16/310	16	310	250
M0020583	RT-SDSA-16/460	16	460	400
M0200168	RT-SDSA-18/310	18	310	250
M0020582	RT-SDSA-18/460	18	460	400
M0200079	RT-SDSA-20/210	20	210	150
M0200080	RT-SDSA-20/310	20	310	250
M0200081	RT-SDSA-20/460	20	460	400
M0020581	RT-SDSA-22/460	22	460	400
M0200169	RT-SDSA-24/310	24	310	250
M0200170	RT-SDSA-24/460	24	460	400
M0020580	RT-SDSA-25/310	25	310	250
M0200171	RT-SDSA-25/460	25	460	400

RT-SDSR

Drill bits Rebar drill SDS plus

High-quality SDS plus drill bits for drilling in reinforced concrete



Features and benefits

- Monolithic carbide tip increases the life of the drill bit
- Centre point for quick commencement of drilling without the drill slipping
- 3 symmetrically arranged cutting edges allow for perfectly straight and axial drilling
- Angle tip 135° allows drilling in reinforced concrete
- Very deep seating of carbide plate significantly improves connection with the drill core, which affects quality
- 3 material extraction surfaces and special shape of the drill facilitate the removal of dust
- Steel with specification 34CrNiMo6 provides high strength and durability

Base material

Approved for use in:

- Reinforced concrete
- Concrete
- Natural Stone (after site testing)
- Solid Concrete Block
- Solid Brick

Applications

- Drilling holes in reinforced concrete, concrete, stone and hard brick
- Suitable for operation with SDS plus hammer drill

Product information

SIG Code	Product Code	Drill diameter	Length	Working length
		[mm]		
M0200172	RT-SDSR-6/160	6	160	100
M0200173	RT-SDSR-6/260	6	260	200
M0020572	RT-SDSR-8/260	8	260	200
M0200174	RT-SDSR-8/310	8	310	250
M0020576	RT-SDSR-10/310	10	310	250
M0020571	RT-SDSR-12/260	12	260	200
M0200175	RT-SDSR-14/210	14	210	150
M0020575	RT-SDSR-14/260	14	260	200
M0020570	RT-SDSR-16/260	16	260	200
M0020569	RT-SDSR-16/310	16	310	250
M0020573	RT-SDSR-18/310	18	310	250

R-KEM II

with Threaded Rods for Masonry

Universal polyester (styrene free) resin – European Approval for 15 substrates



Features and benefits

- The most convenient bonded anchor for general purpose use
- Approved for 15 substrates
- Quick, secure and simple installation
- Product with wide spectrum of use in the medium load capacity area
- Ideal for applications where mechanical anchors are not suitable
- Easy dosage thanks to patented self-opening system and use of manual or electric gun
- Option to use standard manual silicone gun
- Suitable for multiple use. Partly used product can be reused after fitting new nozzle

Base material

Approved for use in:

- Hollow Brick
- Solid Brick
- Hollow Sand-lime Brick
- Solid Sand-lime Brick
- Hollow Lightweight Concrete Block
- Aerated Concrete Block

Applications

- Gates
- Window elements
- Canopies
- Sanitary appliances
- Railings
- Handrails
- Consoles
- Ladders
- Cable trays

Product information

SIG Code	Product Code
M0020533	R-KEM II

R-KER-II

Hybrid resin with Rebar or Studs as an Anchor

High performance hybrid resin approved for use with reinforcement bars or studs



Features and benefits

- Approved for use with rebar as an anchor in cracked and non-cracked concrete
- Winter version can be used in warmer temperatures for faster curing
- Suitable for use in dry and wet substrates as well as holes and substrates covered with water
- Rapid bonding time enables quick execution of works
- Very high load capacity
- Anchor does not generate expansion forces in the concrete which means reduced spacing and edge distances
- Suitable for multiple use. Partly used product can be reused after fitting new nozzle

Base material

Approved for use in:

- Hollow Brick
- Solid Brick
- Hollow Sand-lime Brick
- Solid Sand-lime Brick
- Hollow Lightweight Concrete Block
- Aerated Concrete Block

Applications

- Curtain walling
- Balustrading
- Barriers
- Cable trays
- Cladding restraints
- Structural steelwork
- Rebar dowelling
- Starter bars
- Rebar missed-outs

Product information

SIG Code	Product Code
M5054649	R-KER-II

R-KEX II

with Post-Installed Rebars

Premium pure epoxy resin approved for use with post-installed rebar connections



Features and benefits

- The strongest resin in the epoxy resin class
- Approved for use with post-installed rebars concrete (EAD 330087-00-0601)
- Suitable for use in dry and wet substrates including flooded holes
- High depth of anchoring up to 2,5 m for rebar applications
- Very high chemical resistance – suitable for applications exposed to influence of various agents (industrial or marine environment)
- Minimal shrinkage provides option of use in diamond-drilled holes and oversized holes
- Extended working time ensures easy installation of metal components (up to 30 min. in 20°C)
- For use in positive temperatures
- Diamond and hammer drilling

Base material

Approved for use in:

- Concrete C20/25-C50/60

Applications

- Post-installed rebar connections
- Rebar
- Rebar missed-outs
- Extending existing buildings and structures
- Renovation and modernisation of bridges, buildings
- Safety barriers
- Barriers
- Platforms

Product information

SIG Code	Product Code
M8051027	R-KEX II

Chemical Anchor Accessories

R-Studs Threaded Metric Rods

Threaded rods for use with bonded anchors, available in 5.8 grade steel, 8.8 grade steel and A4 stainless steel



Product information

Size	SIG Code	Product Code	Anchor		Fixture		
			Diameter	Length	Max. thickness t_{fix} for:		Hole diameter
			d	L	$h_{nom, 6d}$	$h_{nom, 12d}$	d_f
[mm]							
M8	M0020559	R-STUDS-08110	8	110	52	4	9
M8	M0020558	R-STUDS-08160	8	160	102	54	9
M10	M0020557	R-STUDS-10130	10	130	58	-	12
M10	M0020556	R-STUDS-10190	10	190	118	58	12
M12	M4021034	R-STUDS-12160	12	160	73	1	14
M12	M0020555	R-STUDS-12190	12	190	103	31	14
M12	M0020554	R-STUDS-12220	12	220	133	61	14
M12	M0020146	R-STUDS-12260	12	260	173	101	14
M16	M0020553	R-STUDS-16190	16	190	75	-	18
M16	M0020552	R-STUDS-16220	16	220	133	61	14
M16	M0020551	R-STUDS-16260	16	260	145	49	18
M20	M4012863	R-STUDS-20260	20	260	117	-	22
M20	M0020550	R-STUDS-20300	20	300	157	37	22
M24	M0020549	R-STUDS-24300	24	300	157	37	22
M8	M0020548	R-STUDS-08110-88	8	110	52	4	9
M10	M0020212	R-STUDS-10130-88	10	130	58	-	12
M12	M0020547	R-STUDS-12160-88	12	160	73	1	14
M16	M0020546	R-STUDS-16190-88	16	190	75	-	18
M16	M4021017	R-STUDS-16220-88	16	220	105	9	18
M20	M0020545	R-STUDS-20260-88	20	260	117	-	22
M8	M0020544	R-STUDS-08110-A4	8	110	52	4	9
M10	M0041603	R-STUDS-10130-A4	10	130	58	-	12
M12	M4021012	R-STUDS-12160-A4	12	160	73	1	14
M16	M0020543	R-STUDS-16190-A4	16	190	75	-	18
M20	M0020542	R-STUDS-20260-A4	20	260	117	-	22



R-BRUSH Manual Wire Brushes

Brush accessory for cleaning out holes prior to anchor installation



Product information

SIG Code	Product Code	Drill diameter	Stud size	Diameter
		[mm]		D
				[mm]
M8051022	R-BRUSH-M08/M	10	M8	12
N8020026	R-BRUSH-M10/M	12	M10	14
N8020027	R-BRUSH-M12/M	14	M12	16
M8051024	R-BRUSH-M16/M	18	M16	20
M8051032	R-BRUSH-M20/M	24	M20	26
M8051034	R-BRUSH-M24/M	28	M24	30

R-BRUSH for Automatic Cleaning System

System for automatic cleaning of deep holes before installing the anchor in a solid substrate



Product information

SIG Code	Product Code	Length	Diameter	Drill diameter	Stud size	Rebar diameter
		L	D			d _s
		[mm]	[mm]			[mm]
M8051014	R-BRUSH-12-TC	200	12	10	M8	–
M8051015	R-BRUSH-14-TC	200	14	12	M10	8
M8051016	R-BRUSH-16-TC	200	16	14	M12	10
M8051017	R-BRUSH-18-TC	200	18	16	–	12
M8051019	R-BRUSH-20-TC	200	20	18	M16	14
M8051011	R-BRUSH-22-TC	200	22	20	–	16
M8051012	R-BRUSH-32-TC	200	32	30	M24	25

Additional Chemical Anchor Accessories



Product information

SIG Code	Product Code	Description
N8020020	R-BLOWPUMP	MANUAL BLOW PUMP
M5054648	R-GUN MULTI DISPENSER	DISPENSER GUN TO SUIT ALL CARTRIDGE SIZES





ALL AREAS

Daniel
Salmon



Owen
Ryan



Paul
Condon



Conor
McWilliams



Jim
Woods



Shane
McGann



SIG DUBLIN

SIG Ireland
Turnpike Road
Ballymount, Dublin 22
D22 P5R7
Tel: (+353 1) 6234541

SIG CORK

Unit 1, Doughcloyne
Industrial Estate
Sarsfield Road, Wilton
Co. Cork T12 W578
Tel: (+353 21) 4321868

SIG LIMERICK

UNIT D3
Eastway Business Park
Ballysimon Road
Limerick V94RDD4
Tel: (353 61) 531 381

SIG BELFAST

8 Balmoral Road
Balmoral Industrial Est.
Belfast
BT12 6QA
Tel: (+44) 28 90380060

SIG OMAGH

Killybrack Business Park
3 Killybrack Road
Omagh
Co. Tyrone BT79 7DG
Tel: (+44) 28 8224 6220